



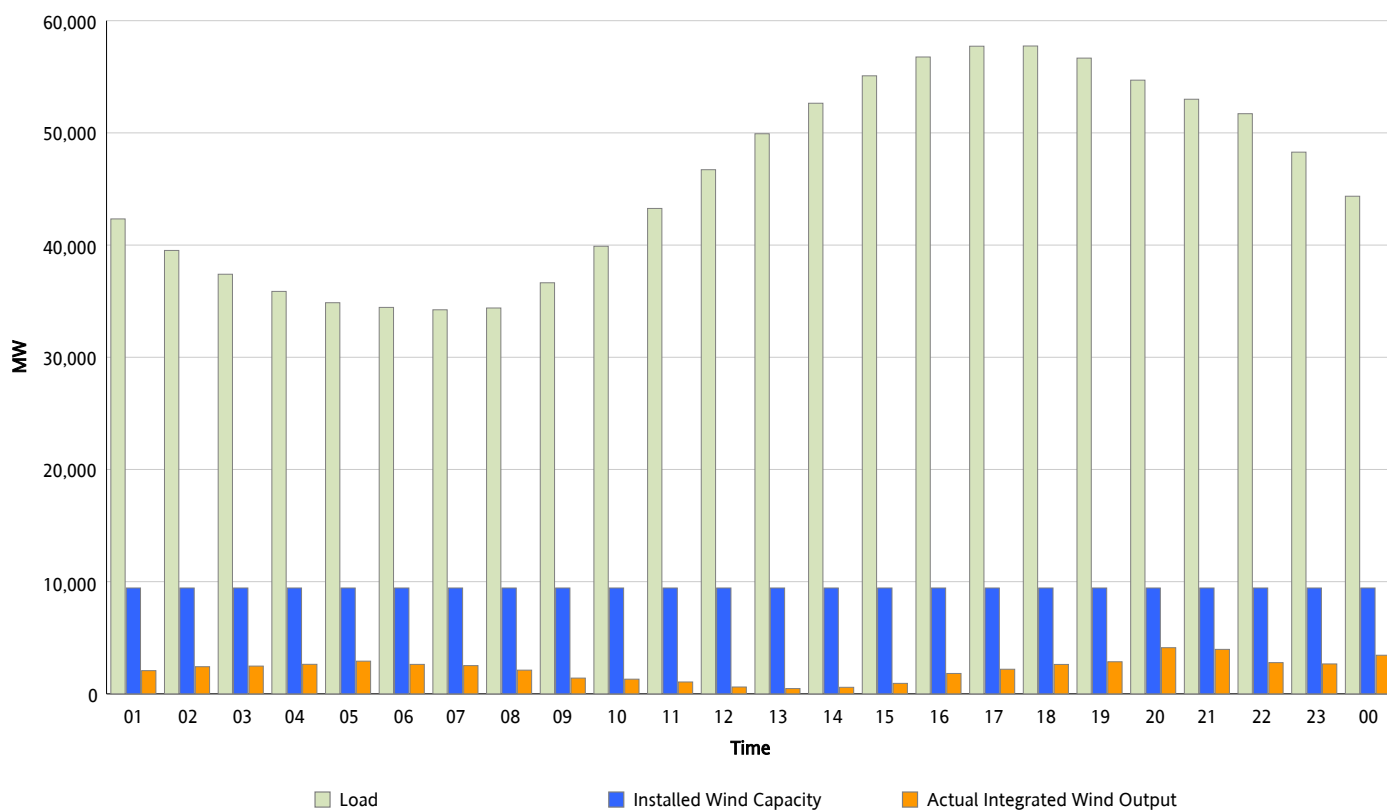
## ERCOT Grid Operations

### Wind Integration Report : 07/22/2012

Peak Load	57,745 MW
Load Peak Hour (HE)	18
Wind Over Peak	2,625 MW
Wind Record 06/19/12	8,368 MW
Max Wind Value*	4,475 MW
Wind Peak Time	19:37
Wind Integration %	8.22 %

#### Hourly Average Actual Load vs. Actual Wind Output

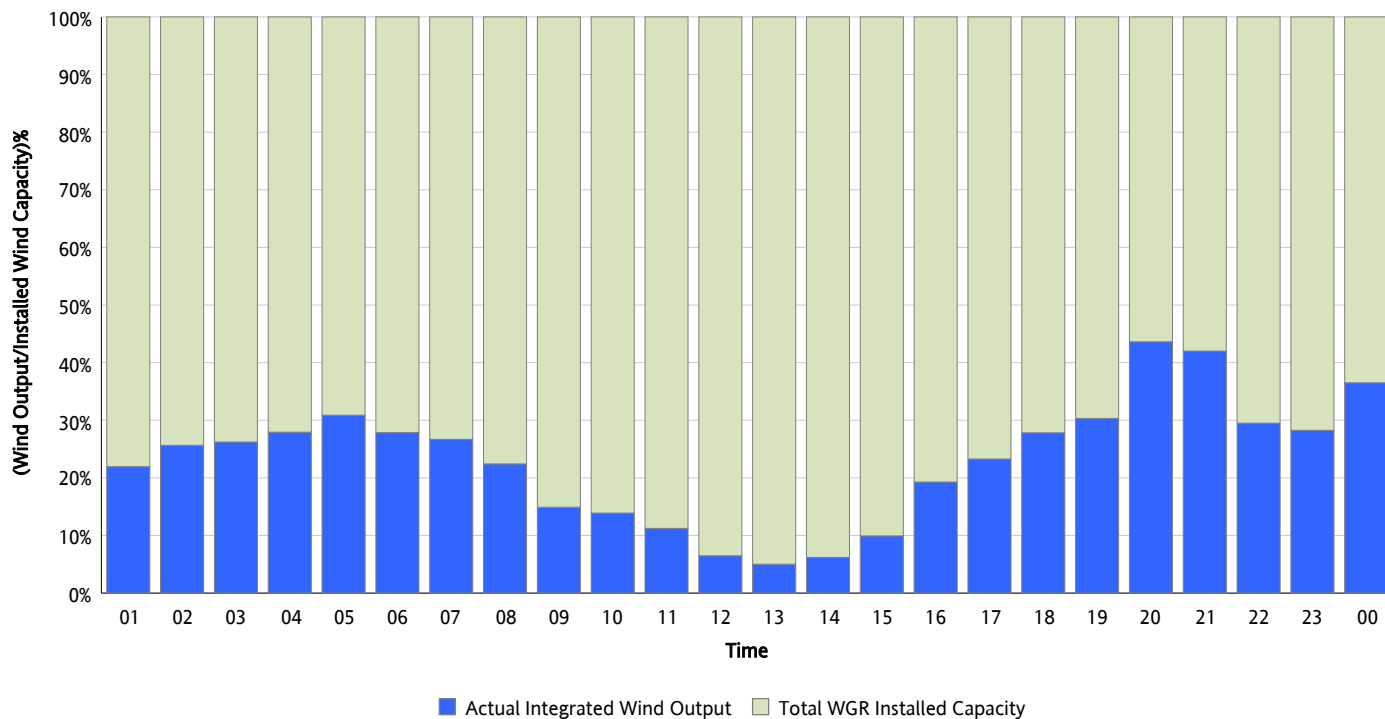
07/22/2012



\* Wind Record and Wind Max represent instantaneous values and the rest of the values are integrated over the hour

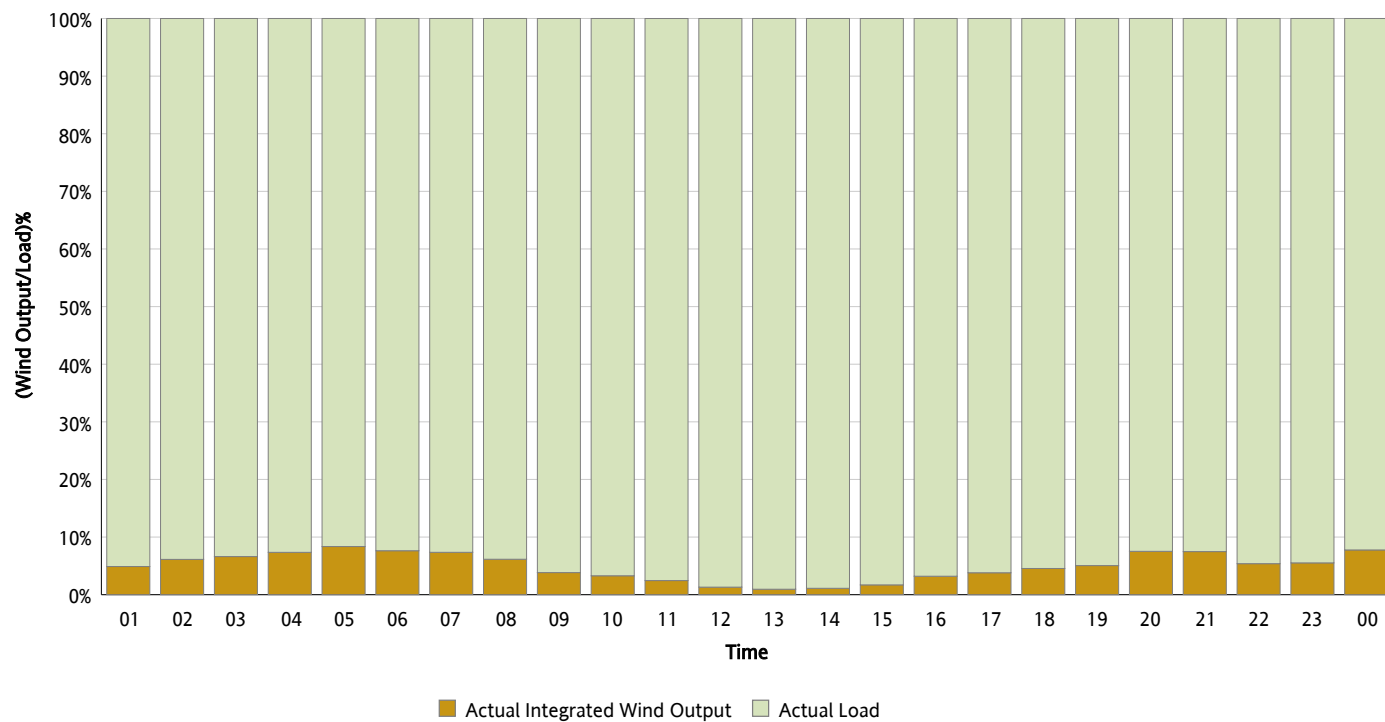
## Actual Wind Output as a Percentage of the Total Installed Wind Capacity

07/22/2012



## Actual Wind Output as a Percentage of the ERCOT Load

07/22/2012



## ERCOT Load vs. Actual Wind Output

07/15/2012 - 07/22/2012

